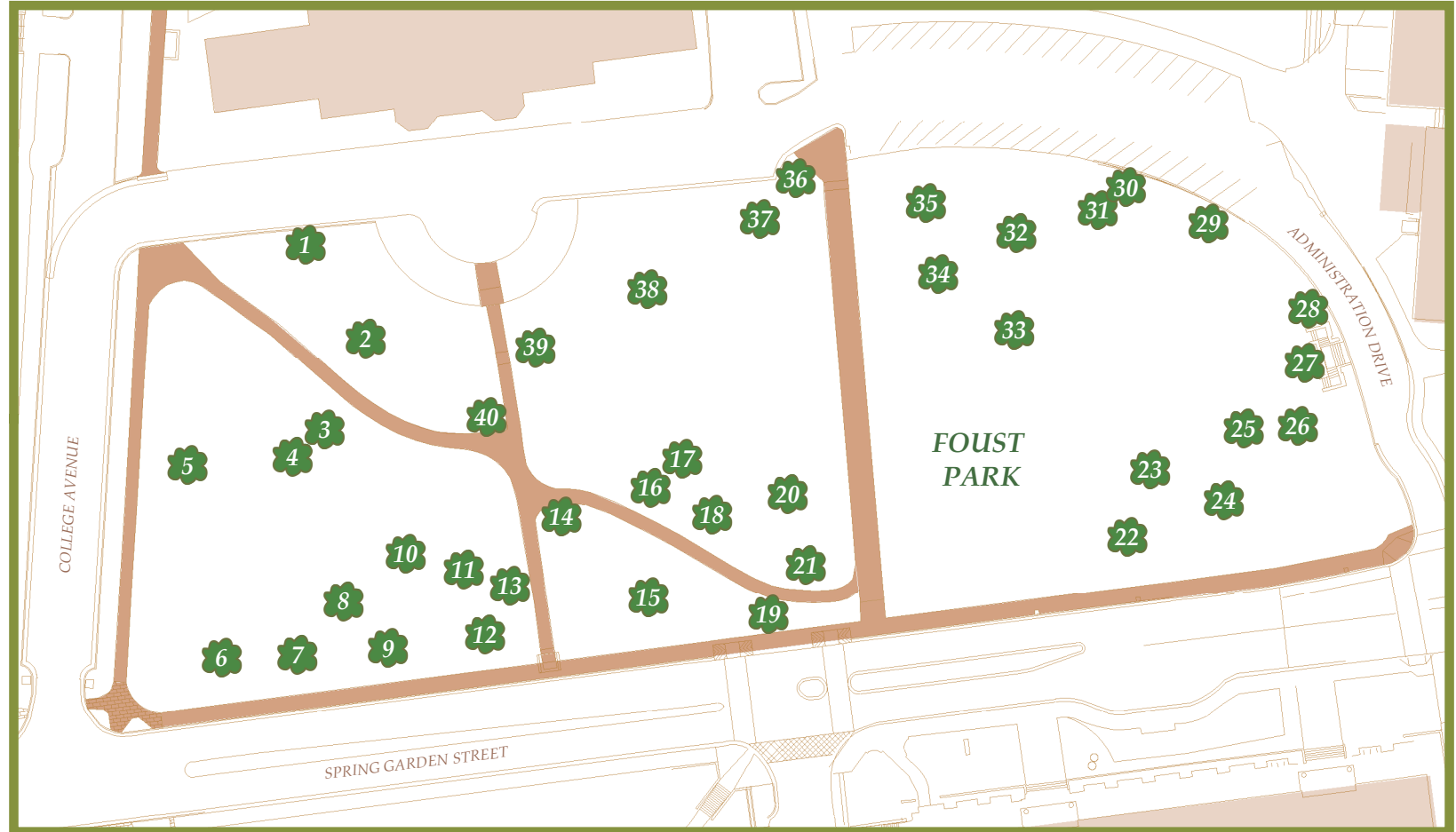


1. Northern Red Oak- *Quercus rubra*
2. Pecan- *Carya illinoensis*
3. Green Ash- *Fraxinus pennsylvanica*
4. Persimmon- *Diospyros Virginiana*
5. Weeping Waterfall Redbud- *Cercis Canadensis 'Traveller'*
6. Harry Lauders Walking Stick- *Corlus Avellana 'Contorta'*
7. Flowering Dogwood- *Cornus florida*
8. European Beech- *Fagus sylvatica*
9. Yellowwood- *Cladrastis kentukea*
10. Red Maple- *Acer rubrum*
11. Copper Beech- *Fagus sylvatica*
12. Purple-leaf Mimosa- *Albizia julibrissin*
13. Plum- *Prunus americana*
14. Dogwood Kousa - *Cornus kousa 'Crown Jewel'*
15. Crabapple- *Malus floribunda*
16. Katsura tree- *Cercidiphyllum japonicum*
17. Boxelder- *Acer negundo*
18. Pin Oak- *Quercus palustris*
19. Dawn Redwood- *Metasequoia glyptostroboides*
20. Kentucky Coffee Tree- *Gymnocladus dioicus*
21. Willow Oak- *Quercus phellos*
22. Sawtooth Oak- *Quercus acutissima*
23. Common Bald Cypress- *Taxodium distichum*
24. Swamp Chestnut Oak- *Quercus michauxii*
25. River Birch- *Betula nigra*
26. Red Bud- *Cercis Canadensis' Appalachian'*
27. Japanese Maple- *Acer Palmatum Dissectum 'Crimson Queen'*
28. Swamp White Oak- *Quercus bicolor*
29. American Chestnut- *Castanea dentata*
30. Shumard Oak- *Quercus shumardii*



31. Fringe Tree- *Chionanthus Virginicus*
32. Water Oak- *Quercus nigra*
33. Sweetheart Tree- *Euscaphis Japonica*
34. Ginkgo- *Ginkgo biloba*
35. Japanese Maple- *Acer palmatum 'Bloodgood'*
36. Japanese Maple- *Acer palmatum 'Shishigashira'*
37. Sweetgum- *Liquidambar styraciflua*
38. Mockernut Hickory- *Carya tomentosa*
39. Sugar Maple- *Acer saccharum*
40. Dogwood Kousa- *Cornus kousa*

