

UNCG has been awarded the Tree Campus USA designation every year since 2009.

The Tree Campus USA program recognizes college and university campuses that:

- Effectively manage their campus trees.
- Develop connectivity with the community beyond campus borders to foster healthy, urban forests.
- Strive to engage their student population utilizing service learning opportunities centered on campus, and community, forestry efforts.



Trees of Foust Park

Developed by

Chris Fay
Bill Hardin
Anneliese Hitcho
Kevin Siler
Rhonda Strader



Trees of Foust Park

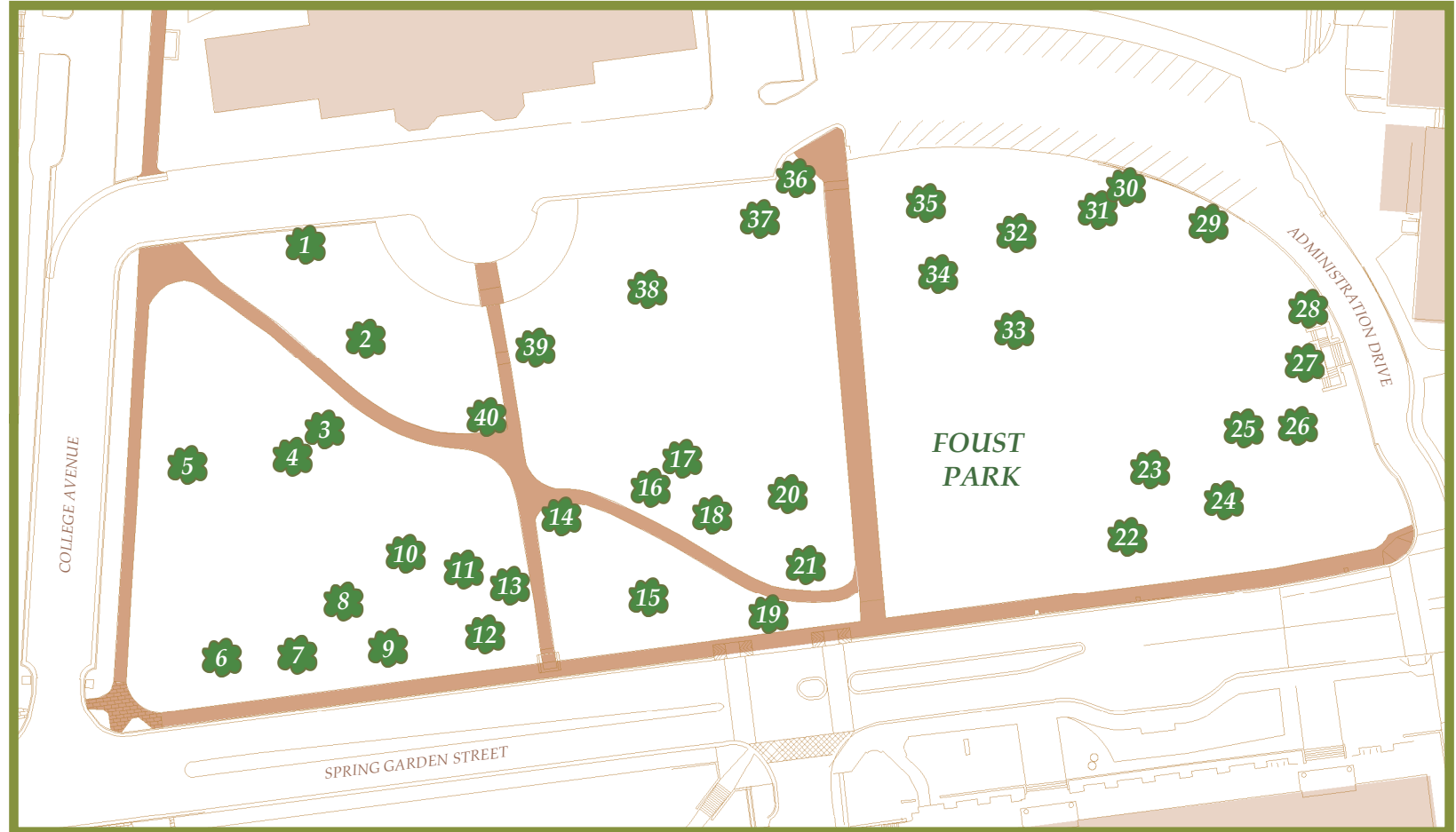
The park-like area between Foust Building and Spring Garden Street has existed since 1892 when the School first opened.

Originally called Front Campus, it was later renamed Foust Park. This area has been used through the years for summer concerts, May Day celebrations, and other campus activities.

Foust Park has over 75 unique trees and shrubs. This self-guided tour will allow you to experience the beauty and variety of the park.



1. Northern Red Oak- *Quercus rubra*
2. Pecan- *Carya illinoensis*
3. Green Ash- *Fraxinus pennsylvanica*
4. Persimmon- *Diospyros Virginiana*
5. Weeping Waterfall Redbud- *Cercis Canadensis 'Traveller'*
6. Harry Lauders Walking Stick- *Corlus Avellana 'Contorta'*
7. Flowering Dogwood- *Cornus florida*
8. European Beech- *Fagus sylvatica*
9. Yellowwood- *Cladrastis kentukea*
10. Red Maple- *Acer rubrum*
11. Copper Beech- *Fagus sylvatica*
12. Purple-leaf Mimosa- *Albizia julibrissin*
13. Plum- *Prunus americana*
14. Dogwood Kousa - *Cornus kousa 'Crown Jewel'*
15. Crabapple- *Malus floribunda*
16. Katsura tree- *Cercidiphyllum japonicum*
17. Boxelder- *Acer negundo*
18. Pin Oak- *Quercus palustris*
19. Dawn Redwood- *Metasequoia glyptostroboides*
20. Kentucky Coffee Tree- *Gymnocladus dioicus*
21. Willow Oak- *Quercus phellos*
22. Sawtooth Oak- *Quercus acutissima*
23. Common Bald Cypress- *Taxodium distichum*
24. Swamp Chestnut Oak- *Quercus michauxii*
25. River Birch- *Betula nigra*
26. Red Bud- *Cercis Canadensis' Appalachian'*
27. Japanese Maple- *Acer Palmatum Dissectum 'Crimson Queen'*
28. Swamp White Oak- *Quercus bicolor*
29. American Chestnut- *Castanea dentata*
30. Shumard Oak- *Quercus shumardii*



31. Fringe Tree- *Chionanthus Virginicus*
32. Water Oak- *Quercus nigra*
33. Sweetheart Tree- *Euscaphis Japonica*
34. Ginkgo- *Ginkgo biloba*
35. Japanese Maple- *Acer palmatum 'Bloodgood'*
36. Japanese Maple- *Acer palmatum 'Shishigashira'*
37. Sweetgum- *Liquidambar styraciflua*
38. Mockernut Hickory- *Carya tomentosa*
39. Sugar Maple- *Acer saccharum*
40. Dogwood Kousa- *Cornus kousa*

